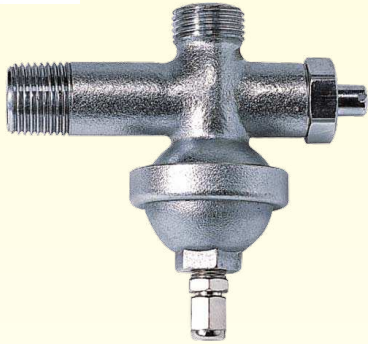
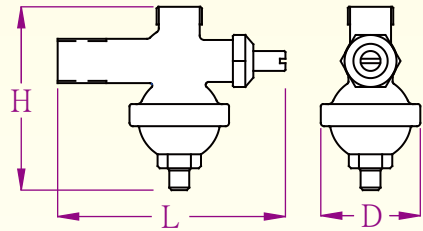
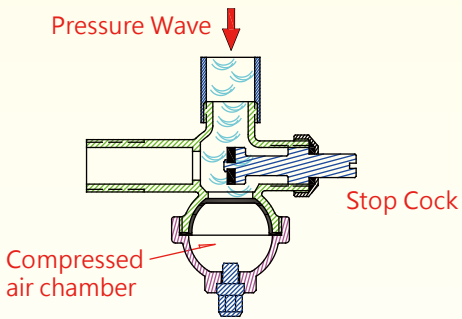


# Angle Valve Style Water Hammer Arrestor



▲ Brass Material

- ★ Applied Condition : Water
- ★ Applied Temperature : -15 °C ~ 80 °C
- ★ Standard air chamber pressure : 1.0 kgf/cm<sup>2</sup>
- ▼ Valve Body Testing Pressure
  - Brass : 12 kgf/cm<sup>2</sup>



Model : AXT (Threaded)

| Size | L   | H   | D  |
|------|-----|-----|----|
| 1/2" | 105 | 97  | 45 |
| 3/4" | 127 | 103 | 56 |

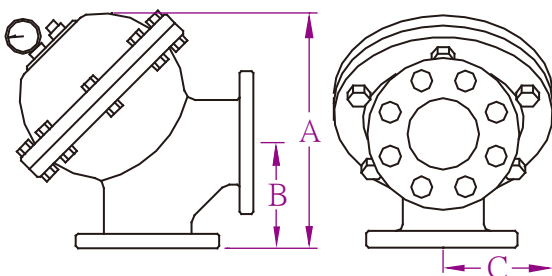
Unit : mm

# L Style Water Hammer Arrestor



▲ Stainless Steel Material

- ★ Applied Condition : Water
- ★ Applied Temperature : -15 °C ~ 80 °C
- ▼ Valve Body Testing Pressure
  - Cast Iron : 21 kgf/cm<sup>2</sup>
  - Stainless Steel : 35 kgf/cm<sup>2</sup>



Model : ALF (Flange)

| Size | A   | B   | C   |
|------|-----|-----|-----|
| 2"   | 230 | 110 | 105 |
| 2½"  | 260 | 130 | 115 |
| 3"   | 275 | 140 | 125 |
| 4"   | 345 | 155 | 150 |
| 6"   | 467 | 200 | 200 |
| 8"   | 560 | 235 | 232 |

Unit : mm