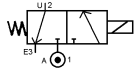


Media: air – water – gas – vacuum 10-6 Torr  
 Pressure range: 0 to 10 Bar max  
 Media temperature: -10°C +150°C max  
 Ambient temperature: -20°C to +60°C  
 Media viscosity: 50 centistokes max  
 Mounting: any position  
 Weight: 1650g per set



NC

# 3/2 Brass

## 1/8 – 1/4 MANIFOLD

### NORMALLY CLOSED

### 3 WAY DIRECT ACTING

### 0 – 10 Bar

## TYPE MDF



#### PRESSURE

Ø Port BSP	Ø Orifice (mm)	Flow Kv Ltr/min	Pressure Rating (Bar)			Seals	Part Number
			Min	Max AC	Max DC		
1/8	1.6	1.3	0	10	7	NBR +100°C Max	MDF6A + seal + voltage
	2.0	1.6	0	7	4.9	Silicone EPDM FKM +120°C Max	MDF6B + seal + voltage
1/4	1.6	1.3	0	10	7	VST PTFE +150°C Max	MDF8A + seal + voltage
	2.0	1.6	0	7	4.9		MDF8B + seal + voltage

#### OPTIONS

IP67 (EN60529:1991+A1:2000) UL & CSA Approved Coil & IP65 LED Connector PG11 – DIN 43650 A  
 Brass manifold 1/8 or 1/4 BSP Port – (2 – 10 Sets)  
 ATEX EExmIIT4 II 2G & 2D IP65 T130°C   
 NPT Thread  
 \*PTFE, VST, Neoprene, ECO, HNBR or Hypalon Seals  
 Stainless Steel and other custom made options available upon request

#### ELECTRICAL DATA

Voltage (-10% + 10%) Continuous duty 100%	Coil	Power Consumption		Insulation class	Enclosure	Electrical connections
		Inrush	Holding			
~ 24 - 48 - 110 - 230 (50 or 60 Hz)	WPG1	11.2VA	8.2VA	H 180°C	IP65 with connector	3 spades DIN 43650 DIN 40050 VDE 0110
= 12 - 24 - 48 (DC)		12 Watts				

#### CONSTRUCTION

Body: Brass  
 Tube and internal parts: Stainless steel  
 Seals and gaskets: NBR (Optional EPDM, Viton, Silicone or PTFE)  
 Moulded coil : Resin

#### REPAIR KIT

Armature	SP + Valve Part Number
Coil	WPG1 + voltage
Solenoid Valve Body	GAB313 + orifice + seal + voltage

#### OVERALL DIMENSIONS

