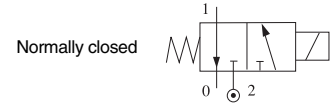


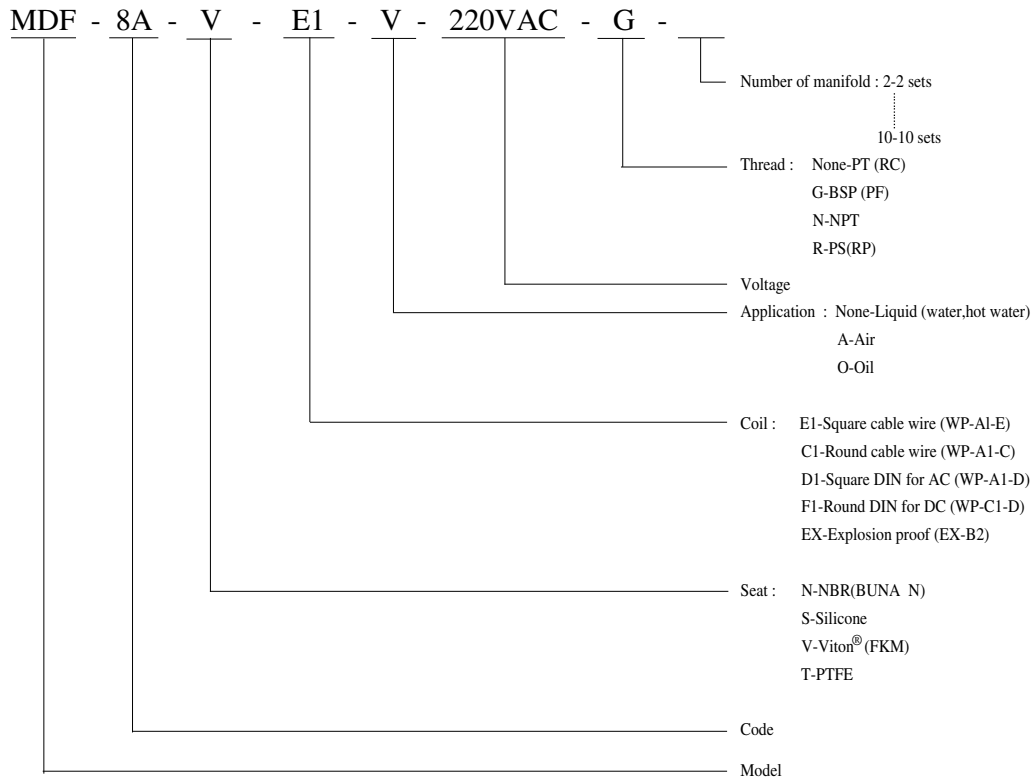
MDF

3/2-way manifold solenoid valve of forged brass body for general application



Model	Port size	Orifice (mm)	CV value	Fluid temp. (°C)	Seat disc	Differential pressure kg/cm ² (bar)			Wt. (kg)
						Liquid	Air	Oil (120°C)	
MDF-6A	1/8 "	1.6	0.09	-10	NBR	0-10	0-10	0-10	1.65
MDF-6B	1/8 "	2.0	0.11	}	Silicone	0-7	0-7	0-7	1.65
MDF-8A	1/4 "	1.6	0.09		EPDM	0-10	0-10	0-10	1.60
MDF-8B	1/4 "	2.0	0.11	(120)	PTFE	0-7	0-7	0-7	1.60

How to order



Notes:

1. Voltage drop range is within $\pm 10\%$.
2. Pressure of voltage DC is 70% of voltage AC only.
3. Selection of coil refer to page 136~139.
4. PTFE seat is custom-made.

Inapplicable Fluids:

1. Fluids that have kinematic viscosity over 50 CST.
2. Fluids that will turn to liquid after being heated and become solid after being cooled.
3. Corrosive fluids.

MDF

3/2-way manifold solenoid valve of forged brass body for general application

● Contour Specification Chart

Unit:mm

