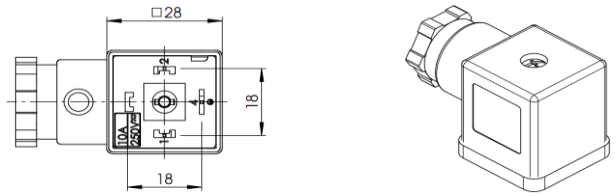


Connector, form A, analogue with EN 175301-803 (ISO 4400)

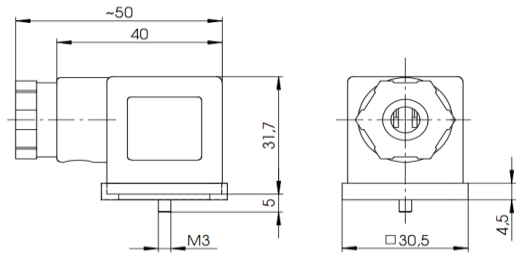
Housing

| | |
|----------|----------------------------------|
| Type | one-piece |
| Color | opaque (milky) |
| Material | PA6 GF20 |
| Imprint | circuit diagram; black; top side |



Cable gland

| | |
|-------------------|--------------|
| Thread | M20 x 1,5 mm |
| Cable diameter | 6-8 mm |
| Color | black |
| Material | PA6 GF30 |
| Tightening torque | 1,8 ± 0,2 Nm |



Terminal block

| | |
|-------------------------------|----------|
| Material | PA6 GF30 |
| Poles | 2 + PE |
| Direction of protecting earth | 12 h |
| Contact distance | 18 mm |

Contacts

| | |
|-------------------------|---------------------------|
| Material | CuZn, tin-plated |
| Resistance | < 15 mOhm |
| Conductor cross-section | 0,5 - 1,5 mm ² |
| Tightening torque | 0,2 ± 0,1 Nm |
| Wire protection | with protection element |

Gasket

| | |
|----------|------------|
| Material | NBR, black |
| Type | profile |

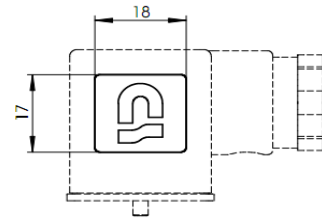
Fastening screw

| | |
|-------------------|----------------------------------|
| Material | steel 4.8, zinc-plated |
| Size | M3 x 33,5 mm (with cross recess) |
| Tightening torque | 0,4 ± 0,1 Nm |
| Sealing washer | n/a |

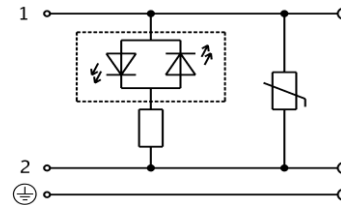
Circuit

| | |
|-----------------------------------|----------------|
| Circuit | LED + varistor |
| Color of LED | red |
| Protecting element | yes, varistor |
| Voltage | 110 V ± 15 % |
| Current type | AC / DC |
| Operating current | max. 1,5 A |
| Protecting against wrong polarity | yes |

Logo



Circuit diagram




General properties

| | |
|---------------------------|-----------------|
| Ambient temperature range | -25°C ... +90°C |
| RoHS | yes |
| CSA approval | n/a |

Packaging

100 pcs packaging. Terminal block and housing are packed in pre-assembled condition. Cable gland components are pre-assembled in housing. Fastening screw is inserted in the packet in packaged condition. Profile gasket is inserted into the packet in packaged condition.

SAP TIM

| | | | | | | | |
|---|----------------------------|---------------|------------|--|--|--|--------------------------------|
| | | | | Zulässige Abweichung für Maße ohne Toleranzangabe Unless otherwise specified tolerances DIN ISO 2768-v | Format/Size: A4 Werkstoff: Material: | Maßstab/Scale: | Gewicht/Weight: |
| 2 | 29839 | 2020.02.11 | AKO | Schutzvermerk beachten Observe protection note ISO 16016 | Benennung: Title: Connector field att. A 03Dr | | |
| 1 | 29329 | 2019.05.28 | GJO | | | | |
| Ind Rev | Änderung-Nr. Change no. | Datum Date | Name By |  | Ident. - Nr.: 611-201-0137 | Freigabe-Nr.: Approval no.: 27389 | Blatt: Sheet: 1/1 |
| Geprüft: Checked: 2020.02.11 JONAS | | | | | Ersatz für/Replacement for: | | |
| Erstellt: Created: 2017.03.21 MANGRA | | | | | | | |