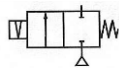


Media: air – water – light oil - steam
 Pressure range: 0 - 4.9 or 0.5 - 20 Bar
 Media temperature: +200°C Max
 Ambient temperature: -20°C to +60°C
 Media viscosity: 50 centistokes max
 Mounting: coil upright
 Opening / Closing 200 mSec Max



LATCHING

2/2 Brass

1/8 - 2

LATCHING

2 WAY DIRECT + SERVO ASSIST

0 – 20 Bar

TYPE LSA



PRESSURE

Ø Port BSP	Ø Orifice (mm)	Flow Kv L/min	Coil	Pressure Rating (Bar) Max ΔP			Part Number
				Min	Steam	Air/ Water	
1/8	3	4.43	WPG1	0	4.9		LSA6A + voltage
1/4	3	4.43	WPG1	0	4.9		LSA8A + voltage
3/8	4	8.29	WPG2	0	4.9		LSA10A + voltage
3/8	15	64.4	WPG2	0.5	12	20	LSA14 + voltage
1/2	15	64.4	WPG2	0.5	12	20	LSA15 + voltage
3/4	20	133	WPG2	0.5	12	20	LSA20 + voltage
1	25	188.8	WPG2	0.5	12	20	LSA25 + voltage
1 1/4	35	371.8	WPG2	0.5	12	20	LSA35 + voltage
1 1/2	35	371.8	WPG2	0.5	12	20	LSA40 + voltage
2	50	686.4	WPG2	0.5	12	20	LSA50 + voltage

OPTIONS

IP67 UL + CSA Approved Coil & IP65 PG11 LED Connector DIN43650A
 NPT Thread
 Stainless Steel Body, High Pressure, Flanged and other custom-made options available upon request

ELECTRICAL DATA

Voltage (-10% + 10%) Continuous duty 100%		Coil	Power Consumption	Insulation class	Enclosure	Electrical connections
=	12 – 24 (DC)	WPG1	12 Watts	H 180°C	IP 65 With Connector	3 spades DIN 43650 DIN 40050 VDE0110
		WPG2	18 Watts			

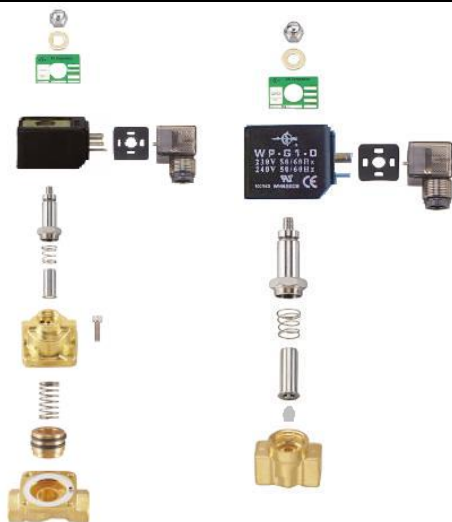
CONSTRUCTION

Body: Brass
 Tube and Spring: 304 Stainless, Armature: 430F Stainless, Other internal parts: Stainless, Shading ring: without
 Seals and gaskets: PTFE
 Moulded coil: Resin

REPAIR KIT

Coil	Coil size (WPG1 or WPG2) + voltage (DC Only)
Piston	SP + valve part number - PISTON
Armature assembly	SP + valve part number - ARMATURE

OVERALL DIMENSIONS



Model	A	B	C	D	E	F	G	H	Kg
LSA6	41	19	86	41	40	-	1/8	10.5	0.47
LSA8	41	19	86	41	40	-	1/4	10.5	0.43
LSA10	50	25	91	53	45	-	3/8	11.7	0.56
LSA14	75	52	123	53	47	43	3/8	15	1.13
LSA15	75	52	123	53	47	43	1/2	15	1.1
LSA20	85	60	149	53	47	43	3/4	25	1.53
LSA25	100	70	149	53	47	43	1	25	1.85
LSA35	120	90	168	53	47	43	1 1/4	33	3.3
LSA40	120	90	168	53	47	43	1 1/2	33	3.25
LSA50	150	120	203	53	47	43	2	40.5	6.8

