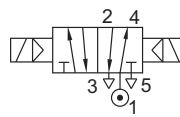


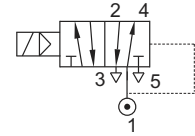
5/2, 3/2 CONVERTIBLE INTRINSICALLY SAFE, NAMUR SOLENOID VALVE

TYPE	PRESSURE

TYPE	PRESSURE
57450IS	2 - 8 bar



TYPE	PRESSURE
51450IS	2 - 8 bar



FEATURES

- Ideally suited where speed control by blocking exhaust is desired
- Power fail to reset
- Non return plug provided on the exhaust port
- In 3/2 mode exhaust purged to spring chamber



Match Slot to 5 for 5/2

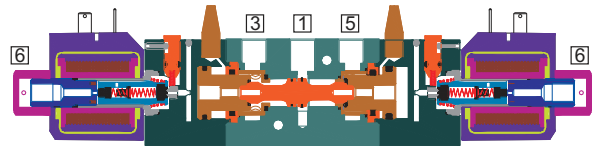


Match Slot to 3 for 3/2



WETTED PARTS

Code	※	B1	B5
Body	Anodized Aluminium	Anodized Aluminium	SS 316
Internals	Aluminium, Brass and SS 316	SS 316	SS 316
Guide Assembly	SS 304		
Shadow-Ring	Copper/ Silver/ None		
Plunger, Insert	SS 430		
Spring	SS 302		
Fasteners	SS 304		
Seat, Seals	NBR, Viton		



AMBIENT AND FLUID TEMPERATURE

-20 °C to 70 °C

SPECIAL VERSION AND SUFFIX

Suffix : (Valve) AM, WO
Special version : (Solenoid) CO

MEDIA

Air, Inert Gases, Water, Oil

APPLICATION

Operation of double/ single acting/ actuator

PORT CONNECTION

INLET	OUTLET	OUTLET	EXHAUST	EXHAUST	PILOT EXHAUST
1	2	4	3	5	6

Contact Rotex for

- Any other ambient, fluid temperature, media and application
- UL listed, Listed general purpose Valve
- SIL4 approved valve



SPARES

(Refer page 25 for ordering code)

SPARE KIT	CODE
Seal Kit : Oring Set and Plunger Assembly	98
Repair Kit : Oring Set, Plunger Assembly, Fastener, Springs, Manual Override	99
Solenoid Kit : Solenoid, Gasket and Nut	34

APPROVAL

(※ applied for)

Approval	Nema 4X	IP67	Ex d IIC T4 or T5 or T6 IP66	Ex ia IIC T6 IP67	DGMS	CCOE
		✓	✓	✓	✓	✓
		✓	✓	✓		
	✓		*			
			✓	✓		
			✓	✓		
			✓	✓		

5/2, 3/2 CONVERTIBLE INTRINSICALLY SAFE, NAMUR SOLENOID VALVE

SPECIFICATION

PORT CONNECTION			PRE-SURE bar		ORIFICE (mm) FLOW FACTOR kv (LPM OF WATER @ 1 bar ΔP)	VALVE TYPE	PILOT PRESSURE	BODY MATERIAL AND INTERNALS				SEALS		MANUAL OVERRIDE		SOLENOID ENCLOSURE			OUTLET PORT	POWER VA		CONSTRUCTION REFERENCE NUMBER
SIZE	BSP(F)	NPT(F)	MINIMUM	MAXIMUM				ALUMINIUM	ALUMINIUM + SS (STD. PORT NPT) SS 316/CF8M (STD. PORT NPT)	BRASS	NBR	Viton	EPDM	F-Silicon	NIL	STAYPUT CUM MOMENTARY	LOW POWER IS PLUG IN, IP67	LOW POWER IS TERMINAL BOX IP67		Low Power IS FPJB Ex d	IS Coil With Circuit Ex ia (d) IIC T6, IP67	

5/2, 3/2 CONVERTIBLE SINGLE SOLENOID

1/4"	2G	2R	2	8	6	18	51450IS	×	B1	B5	×	S2		M0	×	M8	65CR	T	E		13	2		0.3	N29
1/2"	4G	4R	2	8	12	60	51450IS	×	B1	B5	×	S2		M0	×	M8	65CR	T	E		13	4		0.3	N30

5/2, 3/2 CONVERTIBLE DOUBLE SOLENOID

1/4"	2G	2R	2	8	6	18	57450IS	×	B1	B5	×	S2		M0	×	65CR	T	E		13	2		0.3	N29
1/2"	4G	4R	2	8	12	60	57450IS	×	B1	B5	×	S2		M0	×	65CR	T	E		13	4		0.3	N30

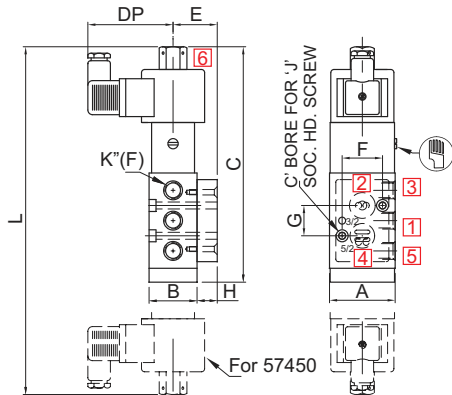
Cable Entry	T	E	×	= Do not specify when opted for
M20 x 1.5	68	73	✓	= Options available
1/2" NPT	67	72		

ORDERING CODE, EXAMPLE VALVE + SOLENOID

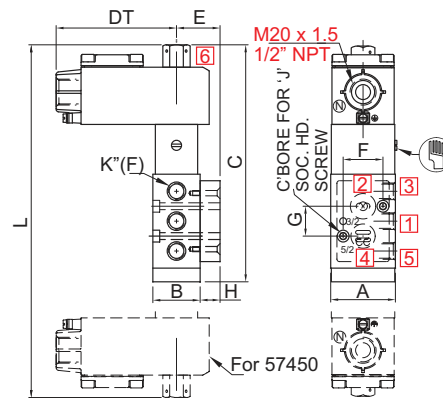
TYPE - SUFFIX - ORIFICE - PORT CONNECTION - BODY AND INTERNALS - MANUAL OVERRIDE - SEAL + SIZE - VOLTAGE - CURRENT - SOLENOID ENCLOSURE - APPROVAL - INSULATION - SPECIAL VERSION
 e.g. 51450IS-6-2R-B5+24V DC-68

DIMENSIONS

All Dimensions are in mm



PLUG IN SOLENOID TYPE 25



TERMINAL BOX/ Ex d TYPE 16, 19, 37, 39

NW	K" (PORT SIZE)	A	B	C	DP	DT	E	F	G	H	J	L	CONST. REF.
VALVE TYPE : 51450													
6	1/4"	53	38	191	68	97	35	32	24	16	M5	--	N29
12	1/2"	75	45	228	68	97	42.5	45	40	20	M6	--	N30
VALVE TYPE : 57450													
6	1/4"	53	38	--	68	97	35	32	24	16	M5	289	N29
12	1/2"	75	45	--	68	97	42.5	45	40	20	M6	232	N30

