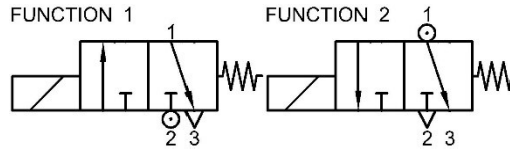




3/2 Way Direct Acting N.C. Plunger Series

Opening: 20~60ms

Closing: 40~120ms



AMBIENT TEMP. -15°C~50°C (No Freezing)

Coil No.	#4	#5	#3E
AC(VA)	18.0	24.0	8.6
Final Temp. °C	88.0	93.0	63.0
DC(W)	15.0	18.5	10.0
Final Temp. °C	103.0	109.0	82.0

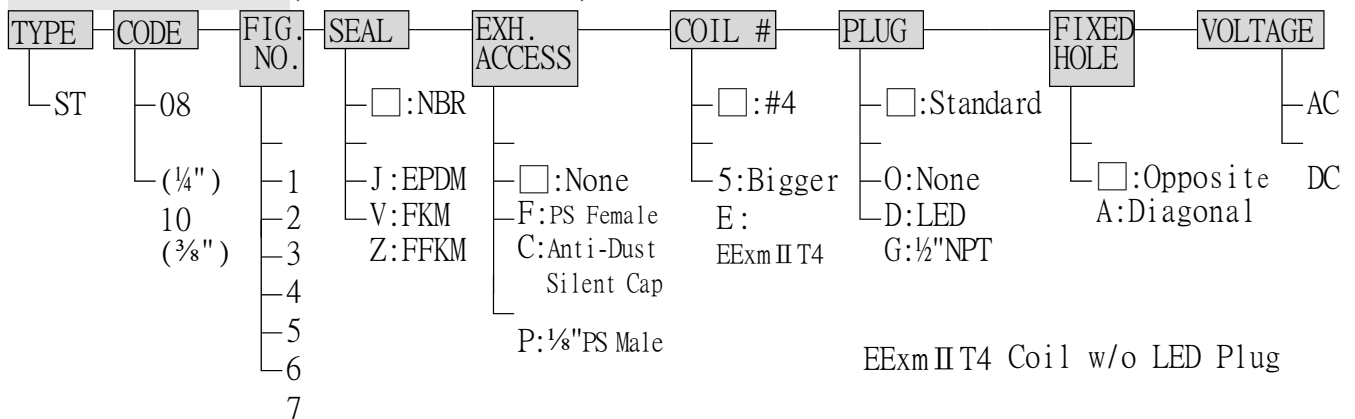
SEAL TEMP. °C

Coil No.	#4	#3E	#5
N:NBR	-5~80		
J:EPDM	-10~145		
V:FKM	-10~145		
Z:FFKM	-20~160	-20~185	

SPECIFICATIONS SUS303 Body · For Water · Air · Gas · Light Oil (50cst down) · Vacuum etc.

CODE (PIPE)	FIG. NO.	ORIFICE mm		SEAL	COIL	WORKING PRESSURE 0~ bar						Cv	Torr
		Body	Tube			#4		#5		#3E			
						1	2	1	2	1	2		
08(1/4") 10(3/8")	1	1.3	1.6	N J V Z	#4 #5 #3E	9	10	12	12	8	10	0.05	10 ⁻²
	2	1.6				8.5		6		0.10			
	3	2.0	2.0			5.5	8	7	10	5	8	0.15	
	4	2.5	2.5			4	6.5	5.5	8	3	6.5	0.20	
	5	3.0	3.0			2.5	4.5	4	5.5	2	4.5	0.31	
	6	4.0				1.5		1.5		4.5		0.51	
	7	5.0				1		1.5		0.8		0.65	
												10 ⁻¹	

TYPE INDICATION (□ means standard)



Examples

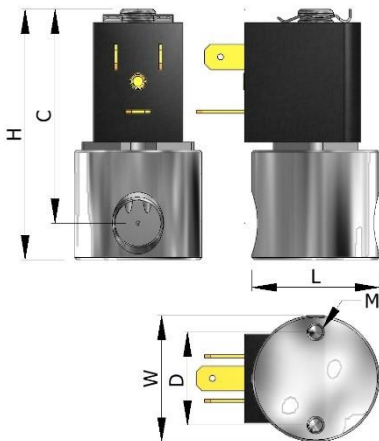
Example 1: ST08-1-D-AC220V
 TYPE ST、 $\frac{1}{4}$ "Pipe、Body 1.3 mm、Tube 1.6mm、NBR SEAL、Nass #4 Coil、LED Plug、AC220V

Example 2: ST10-3-V-5-DC24V
 TYPE ST、 $\frac{3}{8}$ "Pipe、Body 2.0 mm、Tube 2.0mm、FKM SEAL、Nass #5 Coil、Standard Plug、DC24V

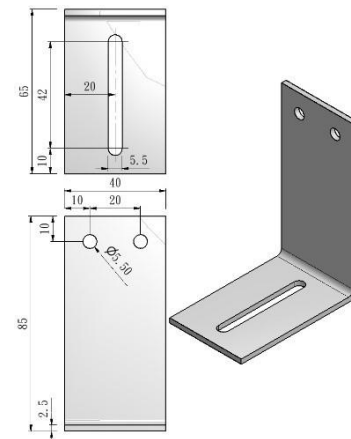
DIMENSIONS/WEIGHT

TYPE	SIZE:mm						NET WEIGHT:kg		
	L	H	C	D	M	A	#4	#5	#3E
08($\frac{1}{4}$ ")	40	86	75	31	M5	22	0.50	0.58	0.83
10($\frac{3}{8}$ ")	42	87				24	0.52	0.60	0.85

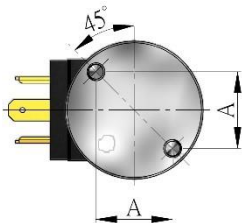
DIMENSIONED DRAWING



OPTION ACCESSORY Bracket (For Opposite Fixed Hole only)



Diagonal Hole



OPTION ACCESSORY EXHAUST PARTS

