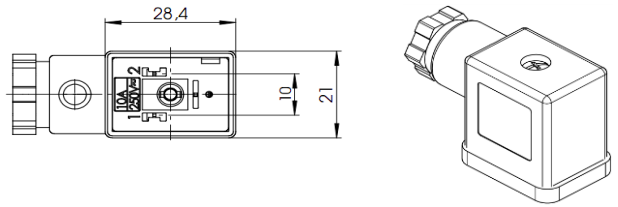


# Connector, form B, analogue with EN 175301-803 (ISO 6952)

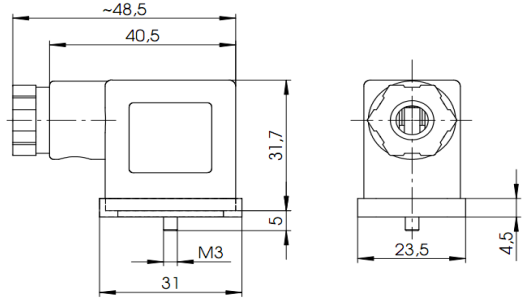
## Housing

Type	one-piece
Color	opaque (milky)
Material	PA6 GF20
Imprint	circuit diagram; black; top side



## Cable gland

Thread	M16 x 1,5 mm
Cable diameter	4-6, 6-8 mm
Color	black
Material	PA6 GF30
Tightening torque	1,8 ± 0,2 Nm



## Terminal block

Material	PA6 GF30
Poles	2 + PE
Direction of protecting earth	12 h
Contact distance	10 mm

## Contacts

Material	CuZn, tin-plated
Resistance	< 15 mOhm
Conductor cross-section	0,5 - 1,5 mm <sup>2</sup>
Tightening torque	0,2 ± 0,1 Nm
Wire protection	with protection element

## Gasket

Material	NBR, black
Type	profile

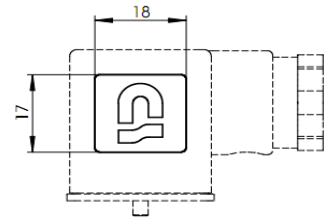
## Fastening screw

Material	steel 4.8, zinc-plated
Size	M3 x 33,5 mm (with cross recess)
Tightening torque	0,4 ± 0,1 Nm
Sealing washer	n/a

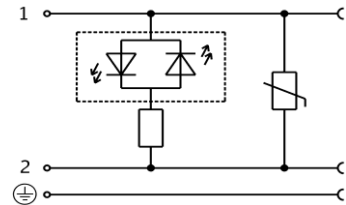
## Circuit

Circuit	LED + varistor
Color of LED	red
Protecting element	yes, varistor
Voltage	24 V ± 15 %
Current type	AC / DC
Operating current	max. 1,5 A
Protecting against wrong polarity	yes

## Logo



## Circuit diagram



## General properties

Ambient temperature range	-25°C ... +90°C
RoHS	yes
CSA approval	n/a

## Packaging

Single packaging. Terminal block and housing are packed in pre-assembled condition. Cable gland components are packed loose. Fastening screw is inserted into the plastic bag. Profile gasket is inserted into the plastic bag. The transparent packaging bag is printed with product informations.

				Zulässige Abweichung für Maße ohne Toleranzangabe Unless otherwise specified tolerances	Format/Size: A4	Maßstab/Scale:	Gewicht/Weight:					
				DIN ISO 2768-v	Werkstoff: Material:							
4	29839	2020.02.17	AKO	Schutzvermerk beachten Observe protection note ISO 16016	Benennung: Title:	<h1>Connector field att. B 03Br</h1>						
3	29397	2019.06.26	GJO		Ident. - Nr.: <h2>613-201-0070</h2>			Freigabe-Nr.: Approval no.:	24263	Blatt: Sheet:	1/1	
2	27893	2017.06.29	LMA					Ersatz für/Replacement for:				
1	25630	2014.09.15	PKR									
Ind Rev	Änderung-Nr. Change no.	Datum Date	Name By									
Geprüft: Checked:				2020.02.17 JONAS								
Erstellt: Created:				2012.09.07 MANGRA								