

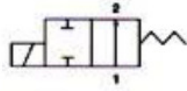
# 2/2 WAY N.O. PLUNGER SERIES

## SOLENOID VALVE

RC2108

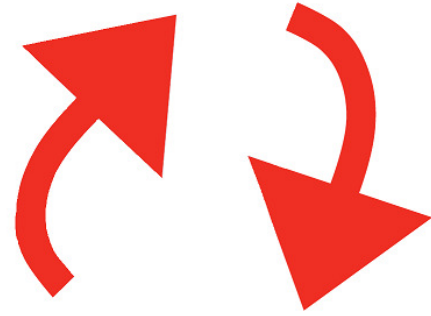


- ★ IP65 100% ED Coil
- ★ PTB Approval EExmIIT4 Coil



### POWER CONSUMPTION

COIL	4	5	3E
AC(VA)	17.6/15.4	33/23	9.2
DC(W)	15	18.5	10



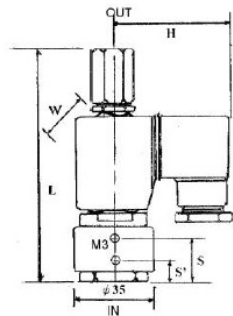
**TYPE RC: 2/2 Way N.O., For Water. Air. Gas. Light Oil.**

CODE (PIPE)	FIG. NO.	Material		Coil	orifice mm	Temp. -5 ~ °C						Working Press. bar			Cv	VAC. torr	
		Seal	Body			Coil 4/ 3E			Coil 5			Coil 4	Coil 5	Coil 3E			
						N	J	V	N	J	V						
06(1/4") 10(3/8")	1	N J V	S.S.	4 5 3E	1.6	90	120	90	150				0~16	0~24	0~16	0.10	10 <sup>-3</sup>
	2				2.0								0~13	0~20	0~13	0.15	
	3				2.2								0~10	0~16	0~10	0.17	
	4				2.5								0~7	0~10	0~7	0.20	
	5				3.0								0~5	0~7	0~5	0.31	

S.S. body

### TYPE INDICATION

TYPE	CODE	BODY MAT'L	FIG.	SEAL MAT'L	COIL	PLUG	VOLTAGE
RC	06 10	S: S.S.	1 2 3 4 5	N: NBR J: EPDM V: FKM	4 5 3E	<input type="checkbox"/> : DIN D: LED G: 1/2"NPTF Y: 2 Wires	



### DIMENSION mm

TYPE	RC
CODE	03   06   10
L	105
H	60
W	30/36
S	17
S'	10
N.W. (kg)	0.45



ISO 9001  
Certificate