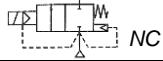


Media: air – water – light oil  
 Pressure range: 1 to 100 Bar max  
 Media temperature: 100°C max  
 Ambient temperature: -10° to +50°C  
 Media viscosity: 40 centistokes max  
 Mounting: vertical position, coil up  
 Weight (including coil): 1250 g  
 Opening or Closing Time: 100 mSec Max



# 2/2 Stainless

## 3/8 & 1/2

### NORMALLY CLOSED

### 2 WAY SERVO ASSISTED

#### 1 – 100 Bar

## TYPE 212250-255



#### PRESSURE

Ø Port BSP	Ø Orifice (mm)	Flow Kv Ltr/Min	Pressure Rating (Bar) ΔP			Seals	Max Media Temp °C	Part Number
			Min	Max air	Max water - oil			
3/8 or 1/2	12	20	1	50		NBR EPDM FKM	60 100 100	21225210 + port + 1 +voltage 21225230 + port + 1 +voltage 21225220 + port + 1 +voltage
			1		50	NBR EPDM FKM	60 100 100	21225310 + port + 1 +voltage 21225330 + port + 1 +voltage 21225320 + port + 1 +voltage
			1	100		PTFE+NBR PTFE+EPDM PTFE + FKM	60 100 100	21225410 + port + 1 +voltage 21225430 + port + 1 +voltage 21225420 + port + 1 +voltage
			1		100	PTFE+NBR PTFE+EPDM PTFE + FKM	60 100 100	21225510 + port + 1 +voltage 21225530 + port + 1 +voltage 21225520 + port + 1 +voltage

#### OPTIONS

IP65 Coil + Connector PG9 – DIN 43650 A  
 NPT thread  
 PTFE seal  
 Explosion proof enclosure: Protection II G/D EExdIICT6 ATEX

#### ELECTRICAL DATA

Voltage (-10% + 15%) Continuous duty 100%	Coil	Power Consumption		Insulation class	Enclosure	Electrical connections
		Inrush	Holding			
~ 24 - 48 - 110 - 230 (50 or 60 Hz)	10065	48 VA	24 VA	F 155°C	IP 65 with connector	3 spades DIN 43650 DIN 40050 VDE 0110
= 12 - 24 - 48 (DC)		14 – 20 Watts				

#### CONSTRUCTION

Body: Stainless steel 316L  
 Tube and internal parts: Stainless steel  
 Seals and gaskets: NBR (Optional EPDM & FKM)  
 Moulded coil: Resin

#### REPAIR KIT

Coil	10065 + voltage
Complete plunger + O' rings + complete piston	KIT + valve part number

#### OVERALL DIMENSIONS

