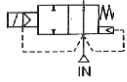


Media: air – water – light oil
 Pressure range: 1 to 300 Bar max
 Media temperature: 100°C max
 Ambient temperature: -10° to +50°C
 Media viscosity: 40 centistokes max
 Mounting: vertical position, coil up
 Weight (including coil): 550 g
 Opening or Closing Time: 100mSec Max



NO

2/2 Stainless

1/8 – 1/4

NORMALLY OPEN

2 WAY SERVO ASSISTED

1 – 300 Bar

TYPE 206252-259-0



PRESSURE

Ø Port BSP	Ø Orifice (mm)	Flow Kv Ltr/min	Pressure (Bar) ΔP			Seals	Max Media Temp °C	Part Number
			Min	Max air	Max water - oil			
1/8 or 1/4	6	5.0	1	50		NBR	60	20625210 + port + 0 + voltage
						EPDM	100	20625230 + port + 0 + voltage
						FKM	100	20625220 + port + 0 + voltage
			1		50	NBR	60	20625310 + port + 0 + voltage
						EPDM	100	20625330 + port + 0 + voltage
						FKM	100	20625320 + port + 0 + voltage
			1	200		PTFE + NBR	60	20625610 + port + 0 + voltage
						PTFE + EPDM	100	20625630 + port + 0 + voltage
						PTFE + FKM	100	20625620 + port + 0 + voltage
			1		200	PTFE + NBR	60	20625710 + port + 0 + voltage
						PTFE + EPDM	100	20625730 + port + 0 + voltage
						PTFE + FKM	100	20625720 + port + 0 + voltage
1	300		PTFE NBR	60	20625881 + port + 0 + voltage			
			PTFE EPDM	100	20625883 + port + 0 + voltage			
			PTFE FKM	100	20625882 + port + 0 + voltage			
1		300	PTFE	180	20625880 + port + 0 + voltage			
			PTFE NBR	60	20625981 + port + 0 + voltage			
			PTFE EPDM	100	20625983 + port + 0 + voltage			
1		300	PTFE FKM	100	20625982 + port + 0 + voltage			
			PTFE	180	20625980 + port + 0 + voltage			

OPTIONS

IP65 Coil & Connector PG9 – DIN 43650 A
 NPT thread
 PTFE seal
 Explosion proof enclosure: Protection II G/D EExdIICT6 ATEX

ELECTRICAL DATA

Voltage (-10% + 15%) Continuous duty 100%		Coil	Power Consumption		Insulation class	Enclosure	Electrical connections
~	=		Inrush	Holding			
~	24 - 48 - 110 - 230 (50 or 60 Hz)	31400	37VA	20VA	F 155°C	IP 65 with connector	DIN 43650A DIN 40050 VDE 0110
=	12 - 24 - 48 (DC)		14 – 20 Watts				

CONSTRUCTION

Body: AISI 316L
 Tube and internal parts: Stainless steel
 Seals and gaskets: NBR (Optional EPDM, FKM & PTFE)
 Moulded coil: Resin

REPAIR KIT

Coil	31400 + voltage
Complete plunger + O' rings + complete piston	KIT + valve part number

OVERALL DIMENSIONS

