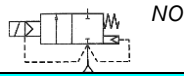


Media: air – water – light oil
 Pressure range: 2 to 300 Bar max
 Media temperature: 150°C max
 Ambient temperature: -10° to +60°C
 Media viscosity: 40 centistokes max
 Mounting: vertical position, coil up
 Weight (including coil): 3200 g
 Opening or Closing Time: 200mSec Max



2/2 Stainless

3/8 - 3/4

NORMALLY OPEN

2 WAY SERVO ASSISTED

2 – 300 Bar


TYPE 212256-259-0



PRESSURE

Ø Port	Ø Orifice (mm)	Flow Kv Ltr/Min	Pressure Rating (Bar) ΔP			Seals	Max Media Temp °C	Part Number
			Min	Max water - oil	Max Gas - air			
3/8	12	30	10		200	PTFE + NBR PTFE + EPDM PTFE + FKM	100 120 150	212256 + seal + 0380 + voltage 212257 + seal + 0380 + voltage
			2	200				
1/2	12	30	10		200	PTFE + NBR PTFE + EPDM PTFE + FKM	100 120 150	212256 + seal + 0120 + voltage 212257 + seal + 0120 + voltage
			2	200				
3/4	12	30	10		200	PTFE + NBR PTFE + EPDM PTFE + FKM	100 120 150	212256 + seal + 0340 + voltage 212257 + seal + 0340 + voltage
			2	200				
3/8	12	30	10		300	Voltalef	150	212258 + seal + 0380 + voltage 212259 + seal + 0380 + voltage
			2	300				
1/2	12	30	10		300	Voltalef	150	212258 + seal + 0120 + voltage 212259 + seal + 0120 + voltage
			2	300				
3/4	12	30	10		300	Voltalef	150	212258 + seal + 0340 + voltage 212259 + seal + 0340 + voltage
			2	300				

OPTIONS

IP65 Coil & Connector PG9 – DIN 43650 A
 NPT 3/8 + 1/2 thread
 NPT 3/4 Thread
 Explosion proof enclosure: Protection II G/D EExdIICT6 ATEX 
 90° Between Inlet and Outlet

ELECTRICAL DATA

Voltage (-10% + 15%) Continuous duty 100%	Coil	Power Consumption		Insulation class	Enclosure	Electrical connections
		Inrush	Holding			
~ 24 - 48 - 110 - 230 (50 or 60 Hz)	31037	48 VA	24 VA	F 155°C	IP 65 with connector	3 spades DIN 43650A DIN 40050 VDE 0110
= 12 - 24 - 48 (DC)		14 – 20 Watt				

CONSTRUCTION

Body: AISI 316L Stainless steel
 Tube and internal parts: Stainless steel
 Seals and gaskets: NBR (Optional EPDM or FKM)
 Moulded coil: Resin

REPAIR KIT

Coil	31037 + voltage
Complete plunger + O' rings + complete piston	KIT + valve part number

OVERALL DIMENSIONS

