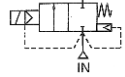


Media: air – water – light oil - steam  
 Pressure range: 0.5 to 120 Bar max  
 Media temperature: +180°C Max  
 Ambient temp: -30°C to +60°C  
 Media viscosity: 50 centistokes max  
 Mounting: coil upright  
 Opening / Closing 200 mSec Max



NC

# 2/2 Stainless

## 3/8 – 2

### NORMALLY CLOSED

### 2 WAY SERVO ASSISTED

### 0.5 – 20, 40, 80 & 120 Bar

## TYPE SAS, H, HH & HHH



#### PRESSURE

Ø Port BSP	Ø Orifice (mm)	Flow Kv Ltr/ min	Pressure Rating (Bar) ΔP			Part Number
			Min	Max Steam	Max Air/ Water	
3/8	15	64.4	0.5	12	20	SAS14 + voltage
1/2	15	64.4	0.5	12	20	SAS15 + voltage
3/4	20	133	0.5	12	20	SAS20 + voltage
1	25	188.76	0.5	12	20	SAS25 + voltage
1 1/4	35	371.8	0.5	12	20	SAS35 + voltage
1 1/2	35	371.8	0.5	12	20	SAS40 + voltage
2	50	686.4	0.5	12	20	SAS50 + voltage
3/8	15	64.4	0.5	12	40	SAS14H + voltage
1/2	15	64.4	0.5	12	40	SAS15H + voltage
3/4	20	133	0.5	12	40	SAS20H + voltage
1	25	188.76	0.5	12	40	SAS25H + voltage
1 1/4	35	371.8	0.5	12	40	SAS35H + voltage
1 1/2	35	371.8	0.5	12	40	SAS40H + voltage
2	50	686.4	0.5	12	40	SAS50H + voltage
3/8	15	64.4	0.5	12	80	SAS14HH + voltage
1/2	15	64.4	0.5	12	80	SAS15HH + voltage
3/4	20	133	0.5	12	80	SAS20HH + voltage
3/8	15	64.4	0.5	12	120	SAS14HHH + voltage
1/2	15	64.4	0.5	12	120	SAS15HHH + voltage

#### OPTIONS

IP67 (EN60529:1991+A1:2000) UL & CSA Approved Coil + IP65 LED Connector DIN 43650A  
 ATEX Coil EExmIIT4 II 2G & 2D IP65 T130°C 10 Bar Max (80 Bar max is special SASP option 3/8 to 3/4 only)  
 Silver Shading Ring (SASxxxS)  
 NPT Thread  
 Other custom made options available upon request

**Included**

#### ELECTRICAL DATA

Voltage (-10% + 10%) Continuous duty 100%	Coil	Power Consumption		Insulation class	Enclosure	Electrical connections
		Inrush	Holding			
~ 24 - 110 - 230 (50 or 60 Hz)	WPG2	18.7VA	15.3VA	H 180°C	IP 65 With Connector	3 spades DIN 43650 DIN 40050 VDE0110
= 12 – 24 DC		18 Watts				

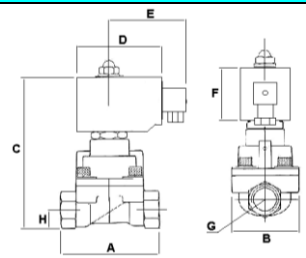
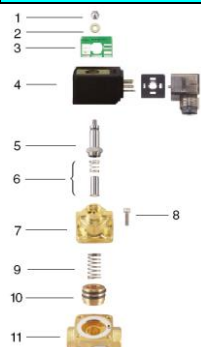
#### CONSTRUCTION

Body: 316 Stainless steel, Tube: 304 Stainless Steel Internal parts: 430F + 303 Stainless steel  
 Seals and gaskets: PTFE, Moulded coil: Resin

#### REPAIR KIT

Coil	WPG2 + voltage
Piston	SP210 + valve part number

#### OVERALL DIMENSIONS



Model	A	B	C	D	E	F	G	H	Kg
SAS14	67	48	123	67	52	42	3/8	15	1.13
SAS15	67	48	123	67	52	42	1/2	15	1.1
SAS20	96	72	149	67	52	42	3/4	25	1.53
SAS25	96	72	149	67	52	42	1	25	1.85
SAS35	120	90	168	52	45	41	1 1/4	33	3.3
SAS40	120	90	168	52	45	41	1 1/2	33	3.25
SAS50	150	122	203	52	45	41	2	40.5	6.8