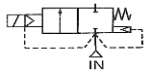


Media: air – water – gas – vacuum 10<sup>-6</sup> torr  
 Pressure range: 0 to 10 Bar max  
 Media temperature: 150°C max  
 Ambient temperature: -20°C to +60°C max  
 Media viscosity: 50 centistokes max  
 Mounting: coil upright  
 Opening / Closing Time: 50 mSec Max



NC

# 2/2 Stainless Flanged

## DN15 – DN50

### NORMALLY CLOSED

### 2 WAY ZERO RATED

### 0 – 10 Bar

## TYPE ADSF



#### PRESSURE

Ø Port PN16	Ø Orifice (mm)	Flow Kv Ltr/ min	Pressure Rating (Bar) ΔP			Seals Temperature °C	Part Number
			Min	Max AC	Max DC		
DN15	15	64.4	0	10	7	NBR +100°C Max	ADS15PF + seal + voltage
DN20	20	133	0	10	7		ADS20PF + seal + voltage
DN25	25	188.8	0	10	7		ADS25PF + seal + voltage
DN32	35	371.8	0	10	7	FKM EPDM *Silicone +120°C Max	ADS35PF + seal + voltage
DN40	35	400	0	10	7		ADS40PF + seal + voltage
DN50	51	686.4	0	7	5		ADS50PF + seal + voltage

#### OPTIONS

IP67 (EN60529:1991+A1:2000) UL + CSA Approved Coil & IP65 LED Connector PG11 – DIN 43650 A  
 ATEX EExmII T4 II 2G & 2D IP65 T130°C coil. ⚡ (Max Pressure 3 Bar)  
 ANSI150Lb, JIS10K or other flange  
 Manual Override (Bottom entry mounted turn T bar)  
 Silver Shading Ring (ADSxxPFS)  
 \*VST, Neoprene, HNBR, Silicone, ECO or Hypalon Seals  
 Other custom-made options available upon request

#### ELECTRICAL DATA

Voltage (-10% + 10%) Continuous duty 100%	Coil	Power Consumption		Insulation class	Enclosure	Electrical connections
		Inrush	Holding			
~ 24 - 110 - 230 (50 or 60 Hz)	WPG2	18.7VA	15.3VA	H 180°C	IP 65 with connector	3 spades DIN 43650A DIN 40050 VDE 0110
= 12 - 24 (DC)		18 Watts				

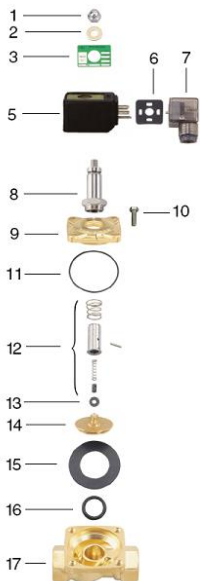
#### CONSTRUCTION

Body: 316 stainless steel CF8M  
 Tube and Spring: 304 Stainless Armature: 430F Stainless other internal parts 316 Stainless  
 Seals and gaskets: FKM (Optional EPDM, NBR, Silicone, VST, HNBR, Neoprene, ECO, Hypalon and Butyl IIR)  
 Moulded coil: Resin

#### REPAIR KIT

Coil	WPG2 + voltage
Diaphragm	SP215 + Valve Part Number

#### OVERALL DIMENSIONS



No.	Part No	Description
1	SP201*	Nut
2	SP202*	Washer
3	SP203*	Nameplate
5	SP205*	Coil
6	SP206*	Gasket
7	SP207*	Connector
8	SP208*	Core Tube
9	SP209*	Valve Bonnet
10	SP210*	Bolt
11	SP211*	Bonnet O Ring
12	SP212*	Armature Assembly
13	SP213*	Diaphragm Base Kit
14	SP214*	Diaphragm Base
15	SP215*	Diaphragm
16	SP216*	Base O Ring
17	SP217*	Valve Body

\* = Valve Part Number

Model	A	B	C	D	Kg
ADS15PF	110	95	140	40	
ADS20PF	120	105	150	40	
ADS25PF	132	115	162	40	5.35
ADS35PF	160	140	174	40	7.75
ADS40PF	160	150	177	40	8.00
ADS50PF	200	165	195	40	11.0

