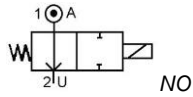


Media: aggressive gases & fluids
 Pressure range: 0 to 1.6 Bar max
 Media temperature: +5°C to 50°C
 Ambient temperature: +5° to +50°C
 Media viscosity: 40 centistokes max
 Mounting: coil upright



2/2 PVC PP PTFE

16,20+25mm Socket, 3/8 + 1/2 BSP

NORMALLY OPEN

2 WAY DIRECT ACTING

0 – 1.6 Bar

TYPE 150B



PRESSURE

	Ø Port	Body	Orifice mm	Flow Kv Ltr/M in	Pressure Rating (Bar)		Seals	Part Number
					Min	Max		
KM Cement Socket	16mm	PVC	10	20.7	0	1.6	EPDM=E FKM=F PTFE=T*	150B10P1KM + seal + voltage
	20mm		15	29.7	0	0.8		150B15P1KM + seal + voltage
	25mm		20	53.0	0	0.4		150B20P1KM + seal + voltage
SM Weld Socket	16mm	PP	10	20.7	0	1.6		150B10P2KM + seal + voltage
	20mm		15	29.7	0	0.8		150B15P2KM + seal + voltage
	25mm		20	53.0	0	0.4		150B20P2KM + seal + voltage
3/8BSP	3/8	PTFE	10	20.7	0	1.6	150B10P4G38 + seal + voltage	
1/2BSP	1/2		15	29.7	0	0.8	150B10P4G12 + seal + voltage	

OPTIONS

IP65 Coil & Connector PG9 – DIN 43650 A
 PTFE Seals
 Viton seals

Included

ELECTRICAL DATA

Voltage (-10% + 5%) Continuous duty 100%		Coil	Power Consumption	Insulation class	Enclosure	Electrical connections
~	230 (50/60 Hz) Rectified	150	8.5 Watts	H 180°C	IP 65 with connector	3 spades DIN 43650 DIN 40050 VDE 0110
=	24 (DC)		7.5 Watts			

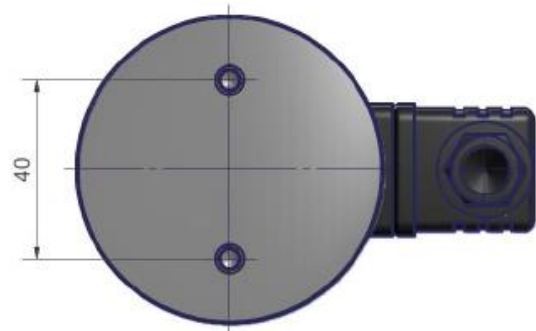
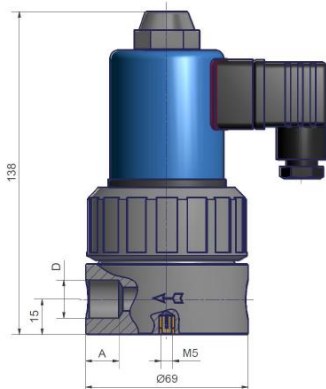
CONSTRUCTION

Body: PVC, Polypropylene or PTFE
 Internal parts: PVC, Polypropylene or PTFE with PTFE bellows
 Moulded coil: Resin

REPAIR KIT

Diaphragm	SP + Valve Part Number -DIAPHRAGM
Coil	150 + voltage
Complete plunger + O' rings	SP + Valve Part Number -ARMATURE

OVERALL DIMENSIONS



DN	D (mm)		A (mm)	
	PVC/PP	PTFE	PVC/PP	PTFE
10	16	G3/8	14	13
15	20	G1/2	16	13
20	25	-	13	-