



2/2 Way Direct Acting N.C. Plunger Series

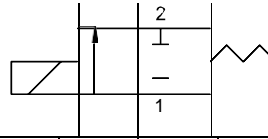
Opening 15~20ms, Closing 30~40ms



ISO 9001



SC
0711



C O I L #	2	3	2E	4	5	3E
A C (V A)	6.9	8.0	4.8	1.4	23.0	9.2
Max Temperature °C	65	60	50	80	85	50
D C (W)	4.8	6.8	5.2	1.0	18.5	10.0
Max Temperature °C	65	73	55	95	95	70

SPECIFICATIONS: 303 S.S. Body, For Water, Air, Gas, Vacuum, Light Oil etc

CODE (PIPE)	FIG. NO.	ORIFICE mm	COIL #	SEAL	TEMPERATURE °C									Max O.P.D. Min. 0 bar						Cv	torr
					# 2			# 3. #2E			# 2			# 3		# 2E					
					N	V	Z	N	V	Z	AC	DC	AC	DC	AC	DC					
03 (1/8")	1	1.0	2	N	-	-	-	-	-	-	20	13	30	24	20		0.03	10 ⁻³			
	2	1.2									16	10	25	20	16				0.05		
	3	1.6									13	8	20	16	14					0.09	
	4	2.0									10	7	15	13	10				0.14		
06 (1/4")	5	2.5	3	V	-	-	-	-	-	-	7	5	10	10	7		0.18	10 ⁻²			
	6	3.0									5	3	7	7	5				0.27		
	7	3.5									2	1	5	4	3					0.35	
	8	5.0									1	0.5	3	2	1				0.40		

CODE (PIPE)	FIG. NO.	ORIFICE mm	COIL #	SEAL	TEMPERATURE °C									Max O.P.D. Min. 0 bar						Cv	torr
					# 4			# 5. #3E			# 4			# 5		# 3E					
					N	J	V T R Z	N	J	V T R Z	AC	DC	AC	DC	AC	DC					
08 (1/4")	1	1.6	4	N	-	-	-	-	-	-	30	20	40	30	20	14	0.10	10 ⁻²			
	2	2.0									20	14	30	20	14	10	0.15				
	3	2.5									14	10	20	14	10	7	0.20				
	4	3.0									10	7	14	10	7	5	0.31				
10 (3/8")	5	4.0	5	V	-	-	-	-	-	-	7	4	10	7	5	4	0.54	10 ⁻¹			
	6	5.0									5	3	7	4	4	3	0.80				
	7	6.0									4	2	5	3	3	2	0.95				
	8	7.5									3	1	3	2	2	1	1.10				
10 (3/8")	9	10.0	3E	R	-	-	-	-	-	-	1	0.5	2	1	1	0.5	1.30	10			

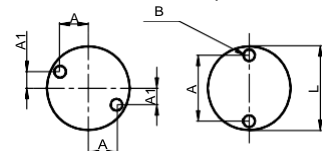
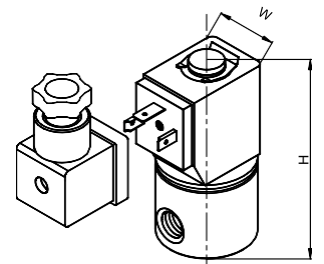
☆ The Seal T or R might have slight leakage, so it is not suitable for vacuum, Evaporable and flammable fluid.

☆ Max Orifice: T-4.0mm, R-3.0mm, J- 5.0 mm

TYPE INDICATION

TYPE	PIPE	FIG.	SEAL	COIL	PLUG	VOLTAGE
SC	03 (1/8") 06 (1/4") 08 (1/4") 10 (3/8")	1 2 3 4 5 6 7 8 9	□ : NBR J : EPDM V : VITON T : PTFE Z : FFKM R : RUBY	□ : #2 3 : EXL □ : #4 5 : EXL E : EXmIIT4 Explosion-Proof	□ : STANDARD O : NONE D : DIN G : 1/2" NPT Y : FLYING LEADS Y: FOR #2 COIL ONLY	

TYPE	L	W : mm				H	A	B	NET WEIGHT: KG					
		#2	#3	#4	#5				#2	#3	#2E	#4	#5	#3E
SC03	25.0	22.0	30.0	-	61.0	18.0	M	0.18	0.23	0.50	-			
SC06	30.0							0.23	0.28	0.55	-			
SC08	40.0	-	30.0	36.0	85.5	A=13. A1=7.	M	0.52	0.60	0.85	-			
SC10								0.51	0.59	0.84	-			



SC08/10

SC03/06

E-mail: sales@solenoid-valves.com

<http://www.solenoid-valve.world>