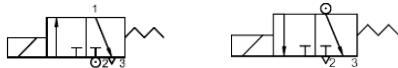


Media: air – water – gas – light oil - vacuum
 Pressure range: 0 to 13 Bar Max
 Media temperature: 145°C Max
 Ambient temperature: -15° to +50°C Max
 Media viscosity: 50 centistokes max
 Mounting: any position
 Open: 5-20mSec, Close: 10-40 mSec Max

FUNCTION 1



3/2 Brass

1/8 - 1/2 (M8 Exhaust)

NORMALLY CLOSED

3 WAY DIRECT ACTING

0 – 13 Bar


TYPE ZT



PRESSURE

Ø Port BSP	Ø Orifice (mm)		Flow Kv Ltr/Min	Pressure Rating (bar) ΔP			Seals	Part Number (Replace xx with port size)
	Base	Top		Min	15 Watt Coil 4	ATEX Coil 3E 22003EX		
1/8 (03)	1.3	1.6	1.3	0	10	10	NBR -5°C to +80°C	ZTxx114 + seal + voltage
	1.6		1.6	0	7	7		ZTxx124 + seal + voltage
1/4 (06)	2.0	2.0	2.5	0	5	5	FKM -10°C to +145°C	ZTxx134 + seal + voltage
	2.5		3.3	0	4	4		ZTxx144 + seal + voltage
3/8 (10)	3.0	2.0	5.1	0	3	3	Ruby + FFKM -20°C to +145°C	ZTxx154 + seal + voltage
	4.0		9.0	0	2	2		ZTxx164 + seal + voltage
1/2* (15)	5.0	2.8	13.3	0	1	1		ZTxx174 + seal + voltage
1/8 (03)	1.3	1.6	1.3	0	18.5 Watt Coil 5		NBR -5°C to +80°C	ZTxx115 + seal + voltage
	1.6		1.6	0	10			ZTxx125 + seal + voltage
1/4 (06)	2.0	2.0	2.5	0	7		FKM -10°C to +145°C	ZTxx135 + seal + voltage
	2.5		3.3	0	5			ZTxx145 + seal + voltage
3/8 (10)	3.0	2.0	5.1	0	4		Ruby + FFKM -20°C to +145°C	ZTxx155 + seal + voltage
	4.0		9.0	0	3			ZTxx165 + seal + voltage
1/2* (15)	5.0	2.8	13.3	0	2			ZTxx175 + seal + voltage

OPTIONS

Connector PG9 – DIN 43650 A
 Explosion Proof Coil: EExmII T4 II ATEX IP65 T 135°C 
 NPT Thread
 Exhaust Port Optional Fittings: female BSP Thread, Hose Barb adaptor or Silencer
 1/2 Port (ZT15)
 EPDM or FKM Sealing
 Ruby sealing

ELECTRICAL DATA

Voltage (-8% + 8%) Continuous duty 100%	Coil	Power Consumption	Insulation class	Enclosure	Electrical connections
~ 24 - 48 - 110 - 230 (50/ 60Hz)	Coil 4 22003	15.4VA	H180°C	IP 65 with connector	3 spades DIN 43650A DIN 40050 VDE 0110
= 12 - 24 (DC)		15 Watts			
~ 24 - 48 - 110 - 240 - 380 (50/ 60Hz)	Coil 5 22005	23VA			
= 12 - 24 - 48 - 240 (DC)		18.5 Watts			

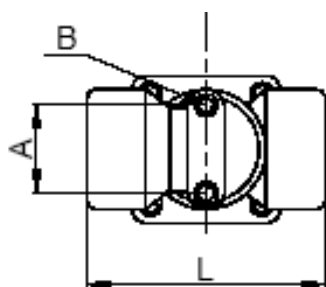
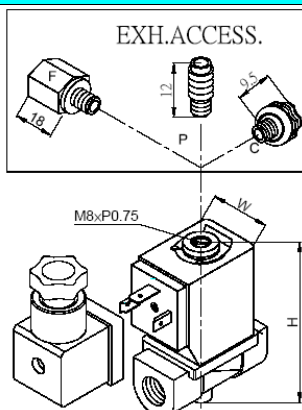
CONSTRUCTION

Body: Brass Seat: Stainless steel
 Tube and internal parts: Stainless steel
 Seals and gaskets: NBR or FKM
 Moulded coil: Resin

REPAIR KIT

Coil	Coil size (22003 or 22005) + voltage
Armature	SP + valve part number - ARMATURE

OVERALL DIMENSIONS



	L	W	H	A	B	Kg
ZT03/06	41	36	74.4	9	M3	0.44
ZT10	52	36	81	12.5	M4	0.52
ZT15	52	36	81	12.5	M4	0.50