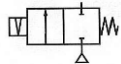


Media: air – water – gas – light oil - vacuum 10<sup>-6</sup> torr  
 Pressure range: 0 to 42 Bar max  
 Media temperature: +180°C max  
 Ambient temperature: -10°C to +50°C max  
 Media viscosity: 50 centistokes max  
 Mounting: coil upright  
 Opening / Closing time: 20 mSec Max



LATCHING

# 2/2 Stainless

## 1/4"

### LATCHING

### 2 WAY DIRECT ACTING

### 0 – 42 Bar

## TYPE LADS8000



#### PRESSURE

Ø Port BSP	Ø Orifice (mm)	Coil	Flow	Pressure Rating (Bar)		Seals	Part Number
			Kv Ltr/min	Min	Max		
1/4	1.2	WPG1	1.0	0	21	NBR +100°C Max	LADS8012 + seal + voltage
	1.6		1.3	0	14		LADS8016 + seal + voltage
	2.0		1.6	0	7		LADS8020 + seal + voltage
	1.2	WPG2	1.0	0	42	Silicone EPDM FKM +120°C Max	LADS8112 + seal + voltage
	1.6		1.3	0	21		LADS8116 + seal + voltage
	2.0		1.6	0	10.5		LADS8120 + seal + voltage
	3.0		3.7	0	7	VST +150°C	LADS8130 + seal + voltage
	4.0		8.3	0	4.2	PTFE +180°C	LADS8140 + seal + voltage
	5.0		9.2	0	3.5		LADS8150 + seal + voltage

#### OPTIONS

IP67 UL + CSA Approved Coil & IP65 LED Connector PG11 – DIN 43650 A  
 \* PTFE, VST, Neoprene, ECO, HNBR or Hypalon Seals  
 Manual Override  
 NPT thread  
 Other custom-made options upon request

#### ELECTRICAL DATA

Voltage (-10% + 10%) Continuous duty 100%		Coil	Power Consumption	Insulation class	Enclosure	Electrical connections
=	12 - 24 (DC)	WPG1	12 Watts	H 180°C	IP 65 with connector	3 spades DIN 43650A DIN 40050 VDE 0110
		WPG2	18 Watts			

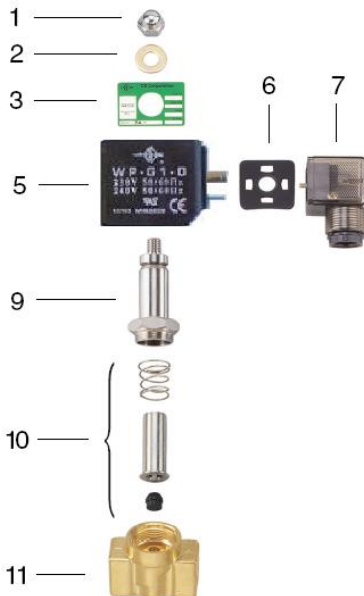
#### CONSTRUCTION

Body: 316 Stainless steel  
 Tube 304 stainless steel, armature 430F stainless steel  
 Shading ring: None  
 Seals and gaskets: FKM (Optional EPDM, NBR, Silicone, PTFE, VST, Neoprene, ECO, HNBR and Hypalon)  
 Moulded coil: Resin

#### REPAIR KIT

Coil	Coil size (WPG1 or WPG2) + voltage
Armature + Seal	SP210 + Valve Part Number

#### OVERALL DIMENSIONS



Model	A	B	C	F	G	H	Kg
8012-8020	41	19	85	63	15	10.5	0.47
8112-8150	41	19	88	65	15	10.5	0.66

Item	Part No	Description
1	SP201-*	Nut
2	SP202-*	Washer
3	SP203-*	Nameplate
5	WPG-*	Coil
6	SP206-*	Gasket
7	SP207-*	Connector
9	SP209-*	Core Tube
10	SP210-*	Armature Assembly
17	SP211-*	Valve Body

\* = Valve Part Number

