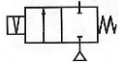


Media: air – water – gas – light oil - vacuum 10<sup>-6</sup> torr  
 Pressure range: 0 to 3.5 Bar max  
 Media temperature: +180°C max  
 Ambient temperature: -10°C to +50°C max  
 Media viscosity: 50 centistokes max  
 Mounting: coil upright  
 Opening / Closing time: 20 mSec Max



LATCHING

# 2/2 Stainless

## 1/8 – 1/2”

### LATCHING

### 2 WAY DIRECT ACTING

### 0 – 3.5 Bar

## TYPE LADS612



#### PRESSURE

Ø Port BSP	Ø Orifice (mm)	Coil	Flow Kv Ltr/min	Pressure Rating (Bar)		Seals	Part Number	
				Min	Max			
1/8	3.0	WPG1	3.7	0	3.5	NBR +100°C Max	LADS6A + seal + voltage	
	4.0		8.3	0	2.5		LADS6B + seal + voltage	
	5.0		9.2	0	1.8		LADS6C + seal + voltage	
1/4	3.0		3.7	0	3.5		Silicone EPDM FKM +120°C Max	LADS8A + seal + voltage
	4.0		8.3	0	2.5			LADS8B + seal + voltage
	5.0		9.2	0	1.8			LADS8C + seal + voltage
3/8	4.0	WPG2	3.7	0	3.5	*VST +150°C Max		LADS10A + seal + voltage
	6.0		11.3	0	1.8			LADS10B + seal + voltage
	8.0		13.9	0	0.7			LADS10C + seal + voltage
1/2	6.0		11.3	0	1.8		*PTFE +180°C Max	LADS12A + seal + voltage
	8.0		13.9	0	0.7			LADS12B + seal + voltage

#### OPTIONS

IP67 UL + CSA Approved Coil & IP65 LED Connector PG11 – DIN 43650 A  
 Manual Override (LADS8 – 10)  
 \* PTFE, VST, Neoprene, ECO, HNBR or Hypalon Seals  
 NPT thread  
 Other custom-made options available upon request

#### ELECTRICAL DATA

Voltage (-10% + 10%) Continuous duty 100%		Coil	Power Consumption	Insulation class	Enclosure	Electrical connections
=	12 – 24 (DC)	WPG1	12 Watts	H 180°C	IP 65 with connector	3 spades DIN 43650A DIN 40050 VDE 0110
=	12 - 24 (DC)	WPG2	18 Watts			

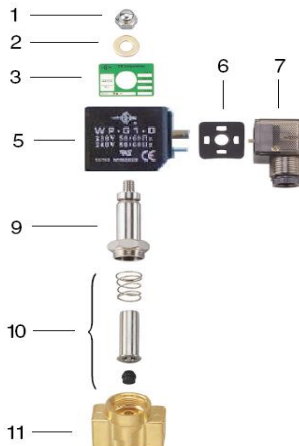
#### CONSTRUCTION

Body: Forged 316 stainless steel (CF8M)  
 Tube 304 stainless steel, armature 430F stainless steel  
 Shading ring: None  
 Seals and gaskets: FKM (Optional EPDM, NBR, Silicone, PTFE, VST, Neoprene, ECO, HNBR and Hypalon)  
 Moulded coil: Resin

#### REPAIR KIT

Coil	Coil size (WPG1 or WPG2) + voltage
Armature + seal	SP210 + valve part number - ARMATURE

#### OVERALL DIMENSIONS



Item	Part No	Description
1	SP201-*	Nut
2	SP202-*	Washer
3	SP203-*	Nameplate
5	WPG*	Coil
6	SP206-*	Gasket
7	SP207-*	Connector
9	SP209-*	Core Tube
10	SP210-*	Armature Assembly
17	SP211-*	Valve Body

\* = Valve Part Number

Model	A	B	C	F	G	H	Kg
LADS6/8	41	19	89	63	15	10.5	0.47
LADS10	50	25	90	65	15	11.7	0.73
LADS12	55	27	91	65	17	13	0.78

