

Working temp: -20°C to +80°C
 Adjustment range: 90° +/- 5°
 Design: Rack + pinion
 Mounting: any position
 Compressed air supply: 2 - 8 Bar
 ISO5211, DIN3337, VD+VDE3845
 Namur interface + ¼ BSP (G)
 Torque safety factor +30%

Air Actuators

6NM to 351NM

Single + Double Acting

ISO5211 F03,05,07,10

TYPE AR/DA



SPRING RETURN

Model	Torque NM 5 Bar Air		Torque NM 7 Bar Air		Spring Torque (NM)		ISO Mount	Drive (mm)	Part Number
	0° Start	90° End	0° Start	90° End	90° Start	0° End			
52AR	11.5	6.7	19.5	15.6	12.4	8.5	F03/F05	11	AA052AR
63AR	22.8	15.6	37.3	30.1	20.9	13.7	F05/F07	14	AA063AR
75AR	28.8	21.2	49.1	41.2	29	21.1	F05/F07	14	AA075AR
83AR	46.7	32.3	78.1	63.7	46	31.6	F05/F07	17	AA083AR
92AR	66.2	44.1	111.3	89.2	68.7	46.7	F05/F07	17	AA092AR
105AR	102	66.5	168.2	132.6	98.4	63.3	F07/F10	22	AA105AR
125AR	146	94	247	194	157	105	F07/F10	22	AA125AR

DOUBLE ACTING

Model	Torque (NM)				ISO Mount	Drive (mm)	Part Number
	4 Bar Air	5 Bar Air	6 Bar Air	7 Bar Air			
52DA	16	20	24	28	F03/F05	11	AA052DA
63DA	29	36	44	51	F05/F07	14	AA063DA
75DA	40	50	60	70	F05/F07	14	AA075DA
83DA	63	78	94	110	F05/F07	17	AA083DA
92DA	90	113	135	158	F05/F07	17	AA092DA
105DA	132	165	198	231	F07/F10	22	AA105DA
125DA	200	251	301	351	F07/F10	22	AA125DA

OPTIONS

Namur Solenoid Valve (CY525S single acting)
 Mechanical Switch Box IP67 M20 conduit
 Hex drive adaptors 11x9mm (ABV-11-9) or 14x9mm (CNX20-14-9)
 Viton or Silicone seals, temperature -40° to +160°C, multi travel rotation 120°, 135° and 180° degree.

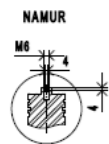
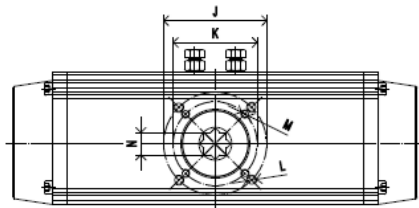
CONSTRUCTION

Body + End Caps: Aluminium Alloy, Internals Stainless Steel, Seals NBR, Pison Bearing PTFE, O rings NBR

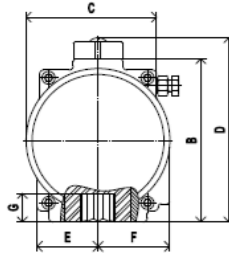
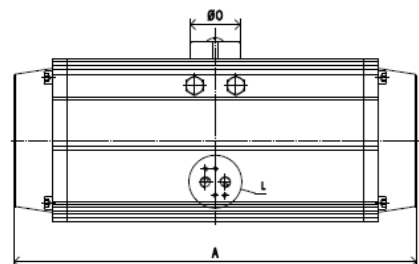
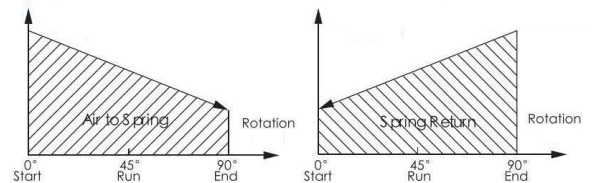
DIMENSIONS

	A	B	C	D	E	F	G	H	I	J	K	L	M	N	O	Air Connection	Kg
52AR	163.5	72	65	97.5	25	42	14	80	30	F05	F03	M8x10	M5x8	11	40	G1/4	1.4
63AR	181	82.6	70	113	35.5	45.5	18	80	30	F07	F05	M8x12	M6x9	14	40	G1/4	2.09
75AR	207	99.5	80.2	125	38.7	52.5	20.5	80	30	F07	F05	M8x12	M6x9	14	40	G1/4	3.2
83AR	212	109	88	134.5	46	56.5	21	80	30	F07	F05	M8x12	M6x9	17	40	G1/4	3.6
92AR	258	117	98.5	142.5	42	61	21	80	30	F07	F05	M8x12	M6x10	17	40	G1/4	5.9
105AR	287	132.5	109.5	158	52	64	24.5	80	30	F10	F07	M10x15	M8x12	22	40	G1/4	7
125AR	312.5	154.4	127	180	60	73.5	29	80	30	F10	F07	M10x15	M8x12	22	50	G1/4	10.5

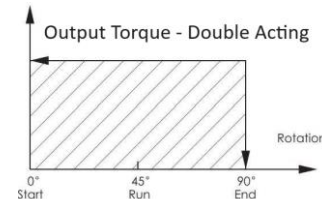
OVERALL DIMENSIONS



Output Torque - Single Acting



Output Torque - Double Acting



Option.

IP67 Switch Box (2x SPDT micro position switches)

