

Media: air
 Pressure range: 1.5 to 8 Bar max
 Media temperature: +50°C max
 Ambient temp: -10°C to +50°C max
 Mounting: any position
 Weight (including coil): 430, 525, 715g
 Exhaust: 3/8

5/2 & 5/3 Aluminium

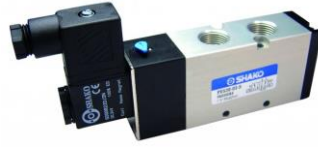
3/8 30mm Width

5/2 S/RETURN 5/2 & 5/3 D/ACTING

1.5 – 10 Bar

TYPE PU52003

5/2 Way Spring Return PU52003S Series



| Ø Port BSP | Ø Orifice (mm ²) | Pressure Rating (Bar) ΔP | | Max Working | Part Number |
|------------|------------------------------|--------------------------|-----|-------------|--------------------|
| | | Min | Max | | |
| 3/8 | 35 | 1.5 | 8 | 10 | PU52003S + voltage |

5/2 Way Double Acting PU52003D Series



| Ø Port BSP | Ø Orifice (mm ²) | Pressure Rating (Bar) ΔP | | Max Working | Part Number |
|------------|------------------------------|--------------------------|-----|-------------|--------------------|
| | | Min | Max | | |
| 3/8 | 35 | 1.5 | 8 | 10 | PU52003D + voltage |

5/3 Way Double Acting PU53003D Series



| Ø Port BSP | Ø Orifice (mm ²) | Pressure Rating (Bar) ΔP | | Max Working | Part Number |
|------------|------------------------------|--------------------------|-----|-------------|--------------------|
| | | Min | Max | | |
| 3/8 | 32 | 2 | 8 | 10 | PU53003D + voltage |

OPTIONS

IP65 Coil & Connector PG9 – DIN 43650 A & manual over ride (Optional flying lead wire coil)
 NPT or Rc Thread
 ATEX 22001EX Coil: ATEX EExmIIT4 II 2G & 2D IP65 T130°C (PU20D + PU530 require 2 coils)
 PU530X Exhaust centre or PU530Y Pressure centre
 MF520 Manifold c/w Gaskets and Fixing Kit (cost is per station Ref: MF520-03 X Number of stations 2-12)

ELECTRICAL DATA

| Voltage (-10% + 15%) Continuous duty 100% | Coil | Power | | Insulation class | Enclosure | Electrical connections |
|--|-------|-----------|---------|------------------|----------------------------|--|
| | | Inrush | Holding | | | |
| ~ 24 - 48 - 110 - 230 (50 or 60 Hz) | 22001 | 7.6 VA | 6 VA | F 155°C | IP 65 with connector | 3 spades DIN 43650 DIN 40050 VDE 0110 |
| = 12 - 24 - 110 (DC) | | 4.5 Watts | | | | |

CONSTRUCTION

Body: Anodised Aluminium
 Tube and internal parts: Stainless steel
 Seals and gaskets: NBR
 Moulded coil: Resin

OVERALL DIMENSIONS

