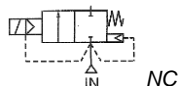


Media: air – water – light oil - steam  
 Pressure: 0.5 to 120 Bar max  
 Media temperature: +180°C Max  
 Ambient temperature: -30°C to +60°C  
 Media viscosity: 50 centistokes max  
 Mounting: coil upright  
 Opening / Closing 200 mSec Max



# 2/2 Brass

## 3/8 – 2

### NORMALLY CLOSED

### 2 WAY SERVO ASSISTED

### 0.5 – 40, 80 & 120 Bar

## TYPE SAH HH & HHH



#### PRESSURE

Ø Port BSP	Ø Orifice (mm)	Flow Kv Ltr/ min	Pressure Rating (Bar) ΔP			Part Number
			Min	Max Steam	Max Air/ Water	
3/8	15	64	0.5	12	40	SA14H + voltage
1/2	15	64	0.5	12	40	SA15H + voltage
3/4	20	133	0.5	12	40	SA20H + voltage
1	25	188.8	0.5	12	40	SA25H + voltage
1 1/4	35	371.8	0.5	12	40	SA35H + voltage
1 1/2	35	371.8	0.5	12	40	SA40H + voltage
2	50	686.4	0.5	12	40	SA50H + voltage
3/8	15	64	0.5	12	80	SA14HH + voltage
1/2	15	64	0.5	12	80	SA15HH + voltage
3/4	20	133	0.5	12	80	SA20HH + voltage
1	25	188.8	0.5	12	80	SA25HH + voltage
1 1/4	35	371.8	0.5	12	80	SAH35T + voltage
1 1/2	35	371.8	0.5	12	80	SAH40T + voltage
2	50	686.4	0.5	12	80	SAH50T + voltage

#### OPTIONS

IP67 (EN60529:1991+A1:2000) UL + CSA approved Coil + IP65 LED Connector PG11 DIN43650A NPT Thread  
 ATEX 22003EX Coil: ATEX EExmII T4 II 2G & 2D IP65 T130°C (Custom Made 25 Bar Max)  
 120 Bar SAHHH 3/8 to 1 only (2x SAHH 80 Bar price)

#### ELECTRICAL DATA

Voltage (-10% + 10%) Continuous duty 100%	Coil	Power Consumption		Insulation class	Enclosure	Electrical connections
		Inrush	Holding			
~ 24 – 110 – 230 (50/60 Hz) DIN	WPG2	18.7VA	15.3VA	H 180°C	IP 65 With Connector	3 spades DIN 43650 DIN 40050 VDE0110
= 12 – 24 DC DIN		18 Watts				

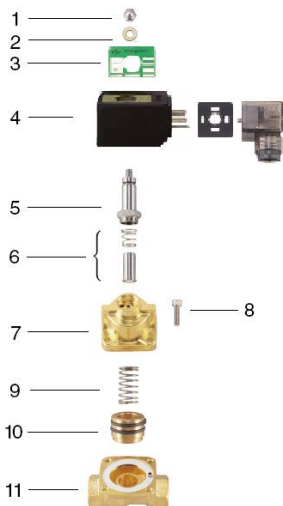
#### CONSTRUCTION

Body: Brass, Tube and Spring: 304 Stainless Armature: 430F Stainless Other internal parts: Stainless steel  
 Seals and gaskets: PTFE, Moulded coil: Resin

#### REPAIR KIT

Coil	WPG2 + voltage
Piston	SP210 + Valve Part Number

#### OVERALL DIMENSIONS



Model	A	B	C	D	E	F	G	H	Kg
SA14	67	48	123	67	52	42	1/2	15	1.1
SA15	67	48	123	67	52	42	1/2	15	1.1
SAH20	96	72	149	67	52	42	3/4	25	1.53
SAH25	96	72	149	67	52	42	1	25	1.85
SAH35T	120	113	178	52	45	41	1 1/4	33	3.3
SAH40T	120	113	178	52	45	41	1 1/2	33	3.25
SA50	150	145	200	52	45	41	2		6.8

Item	Part No:	Description
1	SP201-*	Nut
2	SP202-*	Washer
3	SP203-*	Name Plate
4	WPG2-*	Coil
5	SP205-*	Core Tube
6	SP206-*	Armature Core
7	SP207-*	Valve Bonnet
8	SP208-*	Bolt
9	SP209-*	Piston Spring
10	SP210-*	Piston
11	SP211-*	Valve Body

\* = Model Number

